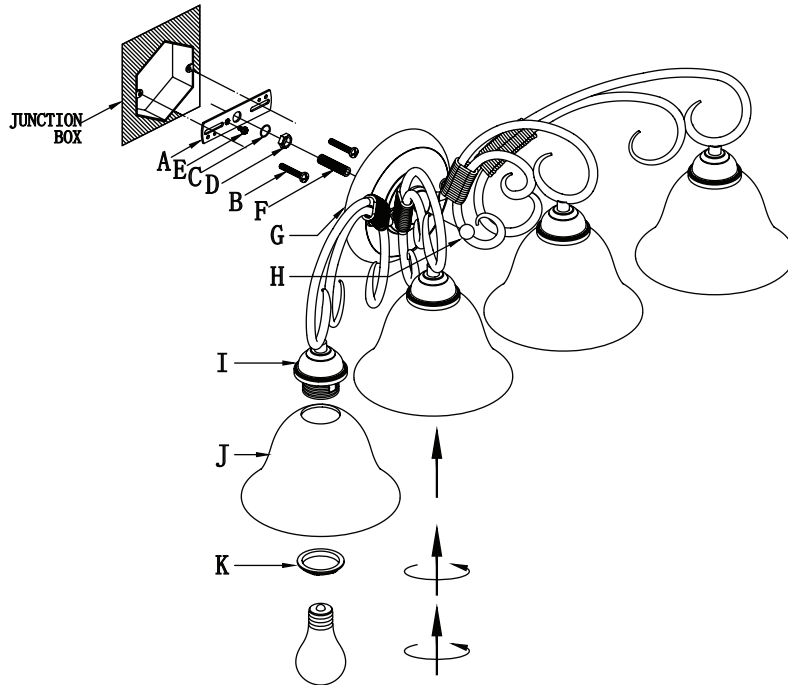


# Assembly Instructions: 8606-BA4

## IMPORTANT:

- ALL INSTALLATION WORK SHOULD BE DONE BY ACCREDITED PROFESSIONAL.
- SHUT OFF POWER SUPPLY AT FUSE OR CIRCUIT BREAKER!
- USE ONLY THE SPECIFIED BULBS. DO NOT EXCEED THE MAXIMUM WATTAGE!

For Customer Service, contact the place of purchase.



How to Identify the Fixture's Wires		
Hot	Neutral	Ground
Smooth	Ribbed	Bare Metal, Green, or Green Inner Thread
Black	White	
Black Inner Thread	White Inner Thread	

House Wires  
Hot  
Neutral  
Ground

Fixture Wires  
Hot  
Neutral  
Ground

## PREPARING FOR INSTALLATION

Remove all of the contents from the carton. See the important notes above. Remove the old fixture from the wall, including the old mounting strap.

1. Mounting strap (A) contains several pairs of threaded holes and a set of mounting screws (B). One end of the mounting strap (A) should have nipple (F) attached with washer (C) and hex nut (D) in place.
2. Place mounting strap (A) up against your junction box. Secure mounting strap (A) to the junction box with mounting screws (B) and a screwdriver. Tighten the screws securely.
3. Pull house wires through the center of the mounting strap (A).

## CONNECTING THE WIRES

4. Attach the fixture's wires to the house wires from the junction box. Connect Hot to Hot (black, transparent wire with a black inner thread, or smooth), Neutral to Neutral (white, transparent wire with a white inner thread, or ribbed), and Ground to Ground (green, transparent wire with a green inner thread, or copper). Twist the ends of the wire pairs together, and then twist on a wire connector. Make sure all twists are in the same direction. If there is no house ground wire coming from the junction box, locate ground screw (E) on the mounting bracket/mounting strap (A) and wrap the fixture's ground wire around the ground screw (E). Use a screwdriver to tighten the top of ground screw (E) onto the wires and into the mounting bracket/mounting strap. Tuck the wires into the junction box.

## FINISHING THE INSTALLATION

5. Place backplate (G) over mounting strap (A) so that nipple (F) protrudes through the center hole in the backplate (G). Secure the backplate to the mounting strap with decorative nut (H). Twist the nut (H) onto the exposed threads of nipple (F) until the backplate (G) of the fixture is snug against the wall.

6. Slide glass shades (J) over the socket (I) and secure in place with socket ring (K).

Install light bulbs (not included) in accordance with the fixture's specifications. Do not exceed the maximum recommended wattage.

Your installation is now complete. Turn on the power and test the fixture.

### CLEANING TIPS

Treat the fixture gently! Regular cleaning will reduce the need for deep cleaning. For regular cleaning, turn off the light and wipe down the fixture with a clean lint-free cotton or microfiber cloth. Never spray cleaner directly onto the fixture.